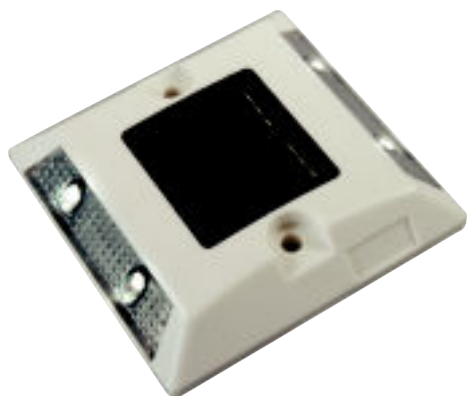
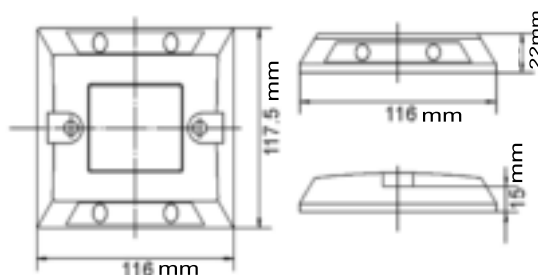


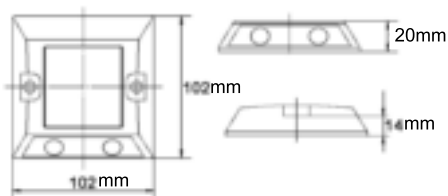
Solar Road Stud 太阳能道钉



MSL-R10



MSL-R11



Item No.: MSL-R10,MSL-R11

- Material of light: Super light-permeability polycarbonate (PC)
- Solar cell: Crystalline silicon 3V/75mA
- Storage component: Ni-MH AA battery 1.2V/900mAh(MSL-R10); 1.2V/700mAh(MSL-R11) or super capacitor
- Light source: MSL-R10:2 x 2pcs of super bright LEDs
MSL-R11:2pcs(single side only) of super bright LEDs
- Color of light: Red, green, blue, white, yellow
- Light mode: Flash type or constant type
- Work Temperature: -25 to +75 °C
- Work Time: Over 12 hrs after 1 sunny day charge, 3 nights continuously if battery fully charged
- Visible distance: More than 800m
- Compression Resistance: 20 tons
- IP rate: IP67
- Product size: MSL-R10:117.5x116x22mm N.W.: 0.28kg
MSL-R11:102x101x20mm N.W.: 0.2kg
- Life time: Over 3 years (fitted with Ni-Mh battery)
Over 8 years (fitted with super capacitor)

型号: MSL-R10,MSL-R11

- 灯体材质: 高透光性聚碳酸酯
- 太阳能板: 晶体硅 3V/75mA
- 储能元件: Ni-MH AA 1.2V/900mAh(MSL-R10) 1.2V/700mAh(MSL-R11) 或者超级电容
- 光源: MSL-R10:2 x 2pcs 超高亮度 LEDs
MSL-R11:2pcs(单边) 超高亮度 LEDs
- 发光颜色: 红、绿、蓝、白、黄(可任一选择)
- 发光模式: 闪烁或者恒亮
- 工作温度: -25 ~ +75 °C
- 工作时间: 正常晴天状态下每晚连续工作12小时以上
电池充饱电时可连续供电3晚
- 可视距离: 大于 800m
- 抗压指数: 20吨
- 防护等级: IP67
- 产品尺寸: MSL-R10:117.5x116x22mm 净重: 0.28kg
MSL-R11:102x102x20mm 净重: 0.20kg
- 使用寿命: 平均寿命3年(配Ni-MH电池)
平均寿命8年(配超级电容)

S2-10

Solar Road Stud
(MSL-R)

