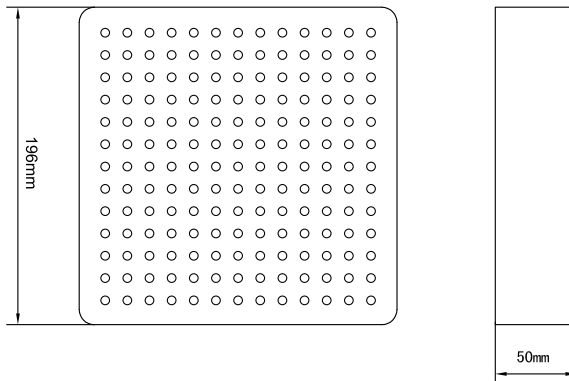
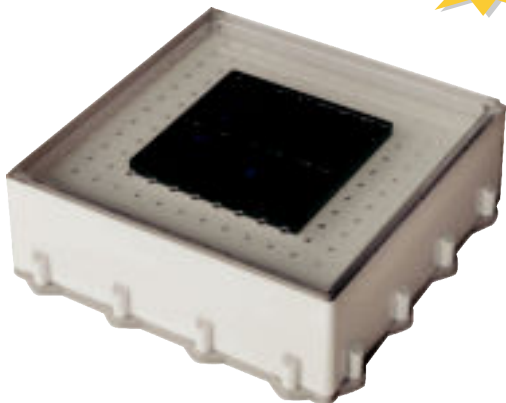


# Solar Brick

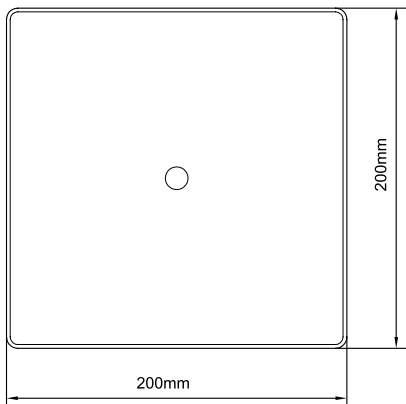
## 太阳能地砖灯

S1-12

Solar Brick &  
Inground Light  
(MSL-B)



### Hardware Fitting(optional) 预埋件尺寸图(选购)



### Item No.: MSL-B200P

- Material of light: Super light-permeability and anti-skip PC
- Solar cell: Crystalline silicon 2.0V/600mA(with battery), 2.5V/480mA (with capacitor)
- Storage component: Ni-MH HT AA 1.2V/4000mAh battery; or 2.3V/720F super capacitor
- Light source: 12pcs of super bright LEDs
- Color of light: Red, green, blue, white, yellow
- Light mode: One color constant light type or Tri-colored diversiform type
- Work Temperature: -25 to +80 °C
- Work Time: Over 12 hrs after 1 sunny day charge, 3 nights continuously if battery fully charged
- Visible distance: More than 800m
- Hardware fittings: Metal mounting case for optional
- IP rate: IP67
- Product size: 196x196x50mm N.w.: 1.5kg
- Life time: Over 3 years (fitted with Ni-MH battery) Over 8 years (fitted with super capacitor)

### 型号: MSL-B200P

- 灯体材质: 高透明性聚碳酸酯(PC)
- 太阳能板: 晶体硅 2.0V/600mA(配电池); 2.5V/480mA配电容)
- 储能元件: Ni-MH AA 1.2V/4000mAh (耐高温电池) 或者2.3V/720F超级电容
- 光源: 12pcs超高亮度 LEDs
- 发光颜色: 红、绿、蓝、白、黄(可任一选择)
- 发光模式: 单色恒亮或者三种颜色变换
- 工作温度: -25 ~ +80 °C
- 工作时间: 正常晴天状态下每晚连续工作12小时以上 电池充电时可连续供电3晚
- 可视距离: 大于 800m
- 五金配件: 不锈钢面板及铸铝预埋件(供选购)
- 防护等级: IP67
- 产品尺寸: 196x196x50mm 净重: 1.5kg
- 使用寿命: 平均寿命3年(配Ni-MH电池) 平均寿命8年(配超级电容)